

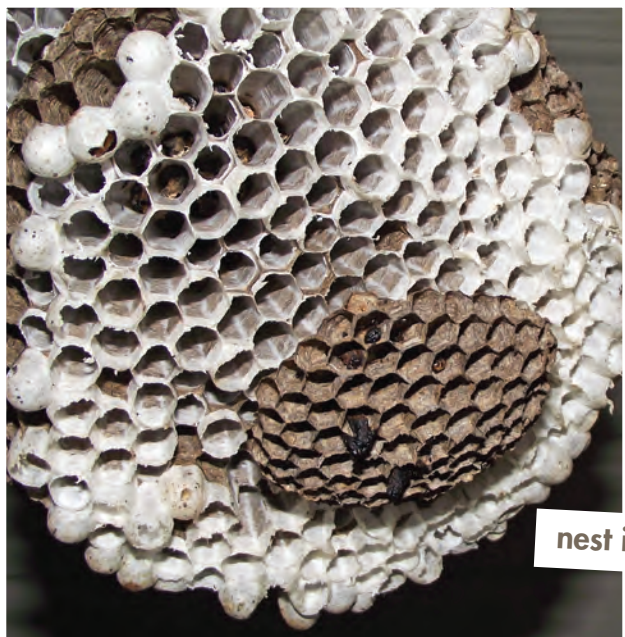


FANCY FIXER-UPPER

The *carrier shell sea snail* makes a strong, glue-like material that it uses to attach small objects to its shell. But the pebbles and shells stuck to this shell aren't just for decoration. They help the baseball-sized snail blend in with the sea floor—and make it less appealing as a meal for predators

PAPER PALACE

This striped “rock” is actually a wasp nest—made of paper! To make the nest, each *bald-faced hornet* scrapes off a bit of wood or plant stem, chews it up, and mixes it with saliva. This makes **pulp**—the same stuff used to make the paper you are holding now. The wasps use their jaws to form the pulp into the right shape. Each stripe on the nest is from a different plant used to make the paper.



nest interior



WATERFRONT LODGE

If you had to build a home and a wall to protect it, you'd be "busy as a beaver," too! Beavers build dams to stop a stream's flow and create ponds. In those ponds, they build **lodges** where they raise their young and store food for the winter. All that building takes a lot of wood. Since beavers don't have chain saws, they have to rely on their big, strong teeth to take down trees. Busy, busy!

dam





STICKY ABODE

When an *orb-weaver spider* finds just the right spot for a web, it quickly builds a frame of silk. Then it weaves a silk spiral inside the frame. The finished web has tiny globs of glue on it. A passing fly just might get caught—and accidentally invite itself over for dinner!

MANY ORB-WEAVER SPIDERS BUILD A NEW WEB EACH DAY!

